



**museo
mundial**

global learning
in european
museums

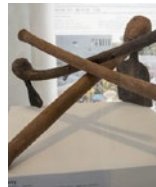
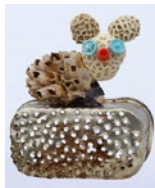
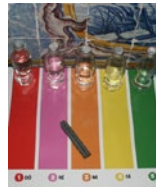


Global Learning in European museums? Why not?

Why not include information
on **modern slavery** around the
world in a natural history museum?

Ever thought about an interactive
installation on the right to **universal
primary education** in a railway
museum?

How about a discussion on the
problem of **energy poverty**
in so-called developing countries
in a museum of agriculture?



Non-Governmental Organizations (NGOs) working on Global Learning educate people on global topics and generate discussion in a world where we are all linked by our actions and decisions. When even distant events impact on us and our decisions influence humans and nature elsewhere, we should all strive towards making the world a more equitable and sustainable place.

Museums are well-established institutions of learning. Millions of European citizens visit museums each year. At the same time many museums are looking for ways to update their traditional topics to address today's problems and issues.

Museo Mundial is a European project that integrates Global Learning into museums, thereby introducing it to the general public. Partners from both museums and development NGOs have elaborated 40 innovative and affordable installations on global issues as embedded elements of exhibitions, presenting them to visitors in Hungary, Germany, Portugal and the Czech Republic. The approach is easily reproducible and offers all kinds of museums the possibility to expand their range of topics. Thus museums reach new target groups while simultaneously generating new audiences for the NGOs' development topics.

See for yourself on the next pages...



Sklaverei heute

Sklaverei hat viele
Gesichter

Die folgenden Informationen zeigen den
Weltweitverbreitung der Sklaverei

Wirtschaftliche
Sklaverei ist die Zwangsarbeit
für einen bestimmten Zeitraum
oder für immer. Sie ist eine Form
der Ausbeutung, die in vielen
Ländern verbreitet ist.

Die Sklaverei ist eine Form der
Ausbeutung, die in vielen
Ländern verbreitet ist.

Wegereisen

Die folgenden Informationen zeigen den
Weltweitverbreitung der Sklaverei

Land	Wegereisen	Wegereisen
USA	100.000	100.000
China	100.000	100.000
Indien	100.000	100.000
Brasilien	100.000	100.000
Russland	100.000	100.000
Frankreich	100.000	100.000
Deutschland	100.000	100.000
Italien	100.000	100.000
Spanien	100.000	100.000
Portugal	100.000	100.000
England	100.000	100.000
Frankreich	100.000	100.000
Deutschland	100.000	100.000
Italien	100.000	100.000
Spanien	100.000	100.000
Portugal	100.000	100.000
England	100.000	100.000



Die folgenden Informationen zeigen den
Weltweitverbreitung der Sklaverei

“ I want to pay
attention to products
that are produced
sustainably and
without exploitation.”

A visitor to the museum

How to inform museum visitors about modern slavery?

This installation sheds light on forms of **forced labour** that are connected to everyday consumer goods in Germany. Its main feature is a **touch screen** depicting a vending machine with several items of everyday use like chocolate or smartphones. By touching an item, the visitor receives information about its production conditions.

In the **Natural History Museum in Nuremberg**, the installation is connected to a diorama of a slave hunt situation.

PARTNERS IN GERMANY:



forum for international development
+ planning (finep)



Natur Historische
Gesellschaft

Natural History Society Nuremberg (NHG)



Dachverband Entwicklungspolitik
Baden-Württemberg e.V.

Dachverband Entwicklungspolitik
Baden-Württemberg (DEAB)



Want to shed a new light on the existing exhibition?

The installation in the shape of an **interactive wardrobe** aims at extending the topic of textile production by adding the global dimension of the **industrialised textile industry**. It raises the following questions: Do you know where your clothes come from? Where have they been produced, by whom and under which working conditions?

The wardrobe has been set up in the West Africa section of the **Natural History Museum** next to a showcase displaying traditional hand weaving in Ghana.

OTHER INSTALLATIONS

IN GERMANY ARE ABOUT:

- Overfishing
- Biopiracy
- Landgrabbing
- Gender Equality
- Migration
- Resources and Recycling
- Trade Routes
- Primary Education



“ The comprehensible linking of global issues with exhibitions in museums and galleries is an example of effective global development education for a wide target group.”

An NGO staff member

Ever thought about an installation on energy poverty?

This installation in the **National Museum of Agriculture in Prague** provides an understanding of **energy poverty**. It discusses the big differences in technologies used for cooking and their accessibility today.

Cooking equipment that is exhibited as ancient artefacts is still commonly used in rural communities around the world. Thus it shows the paradox of the high technological development of some regions and the huge technological gap for billions of people in other areas.

PARTNERS AND ASSOCIATES

IN THE CZECH REPUBLIC:

EDUCON

OBČANSKÉ SDRUŽENÍ – NGO

Educon



National Museum of Agriculture (NZM)



Municipal Museum of Ústí nad Labem

eurosolar.cz

Eurosolar



How to address the effects of sea pollution in a museum?

This installation deals with the **pollution of the oceans** through plastic waste by presenting some artworks out of PET trash and natural materials.

The “gifts of the sea” are presented in an **ancient showcase** in the **Municipal Museum of Ústí nad Labem**, thus giving an impression of precious antique objects. However, the installation is completed with a map of floating plastic trash in order to educate the visitors on the extent and effects of the pollution.

OTHER INSTALLATIONS

IN THE CZECH REPUBLIC

ARE ABOUT:

- Sustainable Architecture
- Fair Trade Coffee
- Biopiracy
- Food Security
- Peak Oil
- Global Partnerships
- Eating Habits around the World
- Information Access
- Access to Pharmaceuticals



“ Museo Mundial offers a great opportunity to link the exhibition with the daily life of the visitors.”

A museum staff member

Why not draw attention to the right to education in a museum?

In the **Hungarian Railway Museum in Budapest**, an interactive installation emphasises the importance of receiving **education** in light of future achievements in people's careers.

It consists of a **bicycle** that powers a traffic light turning from white to red, thus employing two major inventions: a dynamo and a light bulb. Both were made by two geniuses that were poor by birth but escaped their poverty through education.

PARTNERS IN HUNGARY:



Hungarian Baptist Aid (HbAid)



Budapest History Museum (BTM)



Hungarian Railway Museum (HRM)

museo mundial

Drops of water in the desert

Water is essential for life. Without it, we would not exist. It is a precious resource that we must protect and use wisely. In the desert, water is scarce and precious. People have developed various ways to collect and store water in these arid regions. Some use ancient techniques like building cisterns or using animal skins as water containers. Others use modern technology like desalination plants or water filtration systems. The challenge is to ensure that everyone has access to clean, safe drinking water, even in the most remote and arid parts of the world.

Look at these pictures. They show people in the desert using different ways to collect and store water. Some use ancient techniques, while others use modern technology. The challenge is to ensure that everyone has access to clean, safe drinking water, even in the most remote and arid parts of the world.





4 FÜRDŐKULTÚRA – R

BATHING CULTURE – RU



Want to link the exhibition to the daily life of museum visitors?

An installation placed in the **Budapest History Museum** highlights today's **water consumption habits**. To arouse curiosity, an initial section has been implemented in the museum's restrooms such that visitors can check how much water they are using when washing their hands.

The main section is located in the museum's "Bathing Culture" section. It consists of tin buckets, a **table filled with paper balls**, symbolising water drops, as well as various information material in order to present the topic in a descriptive and playful way.

OTHER INSTALLATIONS

IN HUNGARY ARE ABOUT:

- Gender Equality in Education
- Maternal Health
- Sustainable Transport Systems
- Gender Equality in Technical Careers
- Air Pollution
- Railway Transport
- Fair Trade
- Hygiene

mbal é uma sentinela na paisagem, erguendo-se

na única porta de entrada orienta-se para sudeste

“ Since my transformation into an insect supermarket, I’m finally a real part of the museum again and many people come to visit me.”

A rediscovered museum artefact

Ever thought about an insect supermarket in a museum?

This installation offers visitors the opportunity to eat insects in order to change the way we think about our food, thus addressing the problem of possible **future food shortages**.

This idea has been realised by creating an art installation using the physical infrastructure of a dovecote in the garden of the **Museum of Loures Municipality**. It now represents an **insect supermarket**: the holes in the circular wall are a kind of shelf for a particular edible insect and the visitors receive further information on the topic.

PARTNERS IN PORTUGAL:



Instituto Marquês de Valle Flôr (IMVF)



Museum of Loures Municipality (CML)



Instituto Politécnico de Leiria (IPL)



S 3C
PRODUCE OF
COTE D'IVOIRE
COFFEE

67
RECOLT
PBT

CISA

OVERCON
COFFEE GROUP

NICARAGUA
ARABICA LAVADO
SHG EP
INTERGRANO
GRAN MATA GALPA 19
LOTE 51787
CROP 2011/2012

Why not involve museum visitors with a board game?

The picture shows a Museo Mundial installation designed as a **board game** on trade. The game raises awareness of the **unfair trade conditions** between industrialised and so-called developing countries.

Visitors to the **Museum of Loures Municipality** can play the board game while sitting on coffee bags, thus connecting the museum's exhibition on coffee to development topics.

OTHER INSTALLATIONS

IN PORTUGAL ARE ABOUT:

- Responsible Consumption
- Fighting Maternal and Child Mortality
- Fighting Global Diseases
- The Power of Education
- Gender Equality
- Water Scarcity
- Staple Food
- Sea Pollution

“ I think it's very important to be informed about all aspects of human history in order to teach the values of nature and humanity to the next generation and to obtain respect for previous generations. ”

— A German museum visitor —

**VISIT US FOR ALL THE INSTALLATIONS, USEFUL ADVICE ON CARRYING OUT
SIMILAR PROJECTS, POSSIBLE SOURCES OF ERROR,
FURTHER INFORMATION ABOUT THE PARTNERS AND MUCH MORE AT:**

www.museomundial.org

Information is available in Czech, English,
German, Hungarian and Portuguese.



Produced with the financial assistance of the European Union.
Sole responsibility for contents: finep.

Photos: © Museo Mundial project partners